

DEVIL'S CLAW



INFORMATION FORM

Please fill out the following questions about each devil's claw variety you grow. When applicable, all measurements should be metric. Weight can be in lbs. as it's easily converted to grams or kilos.

CATALOG No/CROP NAME:

Date planted:

Date transplanted into garden
(if applicable):

No. seeds planted:

No. germinated seeds (date):

.....
Date of 1st germination:

Did the crop receive full sun, partial sun, or full shade?

.....

Date of 1st flower:

Date of 50% flowering:

Date 1st fruit produced:

Date of 1st harvest:

Date of last harvest:

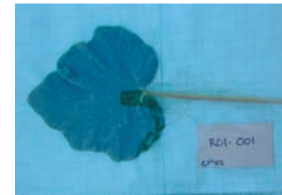
continued

PHOTOGRAPHING DEVIL'S CLAW

Getting good photographs of plants in the field can be difficult. Mostly what we're looking for with devil's claw is some **sense of the overall plant, color of the flowers** and the **length of the claws**. At right are several examples to help you best document each variety you grow. If you're growing more than one devil's claw variety, be sure to label each photograph with the catalog name and number. If you're only growing one variety, it's still a good idea, but less critical. A ruler helps give scale to your photograph and is an important feature for NS/S. If possible, be sure to include **something for scale** in each photograph—a yard/meter stick, shovel, person, etc. for whole plants; a ruler, business card, etc. for close-ups.

Photo-documentation of devil's claw should also include **close-ups of a leaf** and the **green and dried pods**. Please note the **color of seeds** (white or black) on your data information sheet or with a photograph.

SAMPLE PHOTOS



DEVIL'S CLAW



What color were the flowers (include spots or other markings)?

.....
.....

Total number of fruit (claws) produced throughout the season (approx.):

.....

Did the plant give off a smell (sweet, pungent, none)?

.....

Were the claws long or short?

.....
.....

How tall was the plant at maturity?

.....

Were the plants subject to any unusual or particularly harsh weather (hail, hard rain, early frost or freezing etc...)? When? How did they fare?

Were there any problems with disease, fungus, insects, or other pests? How did plants respond? Did you use anything to treat the problem? How well did it work

Please provide an overall description of how you grew this crop, including a brief description of how you watered (hose, drip, rain only, etc.) and about how often (i.e., did it experience some drought, weekly soakings), whether it needed trellising, was it intercropped and with what, did it need extra shade, did the grasshoppers seem to like it particularly, etc.

QUESTION KEY

DEVIL'S CLAW



Date planted: the date you sowed the seeds, either directly into the ground or in a seedling tray.

Date transplanted into garden: the date you transplanted the seedlings into the garden.

Date of 1st germination: the date you noticed the first seedling emerge (either from the ground or in a seedling tray; if a seedling tray, be sure to let us know how/where you started the plants).

Total number of germinated seeds (date): when you decide that no more plants are likely to germinate; be sure to count how many seeds you plant!

Date of 50% flowering: the date when 50% of the number of plants are in flower, even if they only have one flower each!

Date 1st fruit produced: the date you see the first fruit form.

Date of 1st /last harvest: this may depend on how you harvest; if you wait to harvest mature fruit all at once at the end of the season, simply record that date; if you harvest periodically, just record the dates of your first and last harvests.

What color were the flowers (include spots or other markings)?
The flowers on devil's claw are beautiful, some with deep pink color. There are often markings or spots inside the corolla as well as a "landing strip" to guide insects. **A photograph works best.**

Total number of fruit produced throughout the season: if you harvest periodically, just give us an assessment of whether you considered it prolific (more claws than you know what to do with), fine, or poor (not enough claws).

Did the plant give off a smell (sweet, pungent, none)? Some of our devil's claw varieties give off a very pronounced sweet perfume. Let us know how your variety smells, if at all.

Were the claws long or short? Claw length is mostly a genetic factor, but it will be interesting to see if environment seems to play a role or not. Measure 10 or more claws (from the pointy tip to where it connects to the fruit pod, just as it starts to widen).

How tall was the plant at maturity? Try to measure from the ground to the average highest point in the plot; a metric ruler (cm) is best, but use whatever you have.