

TOMATOES AND TOMATILLOS



INFORMATION FORM

Please fill out the following questions about each tomato/tomatillo variety you grow. When applicable, all measurements should be metric. Weight can be in lbs. as it's easily converted to grams or kilos.

CATALOG No./CROP NAME:

Date planted:

Date transplanted into garden (if applicable):

No. seeds planted:

No. germinated seeds (date):

Date of 1st germination:

Did the crop receive full sun, partial sun, or full shade?

.....

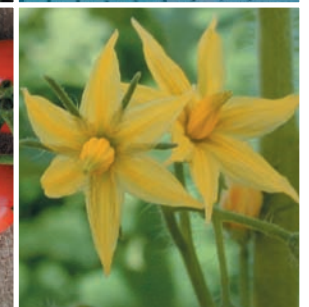
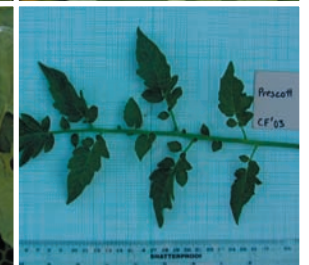
continued

PHOTOGRAPHING TOMATOES

Getting good photographs of plants in the field can be difficult. Mostly what we're looking for with tomato/tomatillo is some **sense of the overall plant and fruit color, size and shape**. At right are several examples (first 3 photographs are tomatillos and the next 4 photographs are tomatoes) to help you best document each variety you grow.

If you're growing more than one tomato/tomatillo variety (tomato varieties will cross with each other, as will tomatillo varieties, but tomatoes will not cross with tomatillos), be sure to label each photograph with the catalog name and number. If you're only growing one variety, it's still a good idea, but less critical. A ruler helps give scale to your photograph and is an important feature for NS/S. If possible, be sure to include **something for scale** in each photograph—a yard/meter stick, shovel, person, etc. for whole plants; a ruler, business card, etc. for close-ups.

SAMPLE PHOTOS



Date of 1st flower:

Date of 50% flowering:

Date 1st fruit produced:

Date of 1st harvest:

Date of last harvest:

Total weight (or number) of fruit produced throughout the season (approx.):

What form did the plant take (viney, sprawling, upright bush, spreading bush, etc.)?

.....

How tall was the plant at maturity?

What color(s) did the fruit turn as they matured?

.....

Was the outer “paper sheath” difficult to remove?

.....

How did the mature fruit taste (tangy, sweet, juicy, etc.)? Were the fruit tough, meaty, pithy?

Did you cook/bake/can the fruit? How did they fare?

Were the plants subject to any unusual or particularly harsh weather (hail, hard rain, early frost, etc.)? When? How did they fare?

Were there any problems with disease, fungus, insects, or other pests? How did plants respond? Did you use anything to treat the problem? How well did it work?

Please provide an overall description of how you grew this crop, including a brief description of how you watered (hose, drip, rain only, etc.) and about how often (i.e., did it experience some drought, weekly soakings), whether it needed trellising, was it intercropped and with what, did it need extra shade, did the grasshoppers seem to like it particularly, etc.

QUESTION KEY

TOMATOES AND TOMATILLOS



Date planted: the date you sowed the seeds, either directly into the ground or in a seedling tray.

Date transplanted into garden: the date you transplanted the seedlings into the garden.

Date of 1st germination: the date you noticed the first seedling emerge (either from the ground or in a seedling tray; if a seedling tray, be sure to let us know how/where you started the plants).

Total number of germinated seeds (date): when you decide that no more plants are likely to germinate; be sure to count how many seeds you plant!

Date of 50% flowering: the date when 50% of the number of plants are in flower, even if they only have one flower each!

Date 1st fruit produced: the date you see the first fruit form.

Date of 1st/last harvest: this may depend on how you harvest the tomatoes/tomatillos; if you wait to harvest mature fruit all at once at the end of the season, simply record that date; if you harvest periodically, just record the dates of your first and last harvests.

Total weight (or number) of fruit produced throughout the season: if you harvest periodically, just give us an assessment of whether you considered it prolific (more tomatoes/tomatillos than you know what to do with), fine, or poor (not enough tomatoes/tomatillos to satisfy your needs).

What form did the plant take? Most tomatoes/tomatillos are somewhat bushy, but they can vary; **a photograph is best for this.** Viney indicates that it vines up a support; sprawling indicates it lies prostrate on the ground.

How tall was the plant at maturity? Try to measure from the ground to the average highest point on the plot; a metric ruler (cm) is best, but use whatever you have.

What color(s) did the fruit turn as they matured? Some tomatoes turn colors from green at immaturity to orange, red, purple, even green at maturity; tomatillos may also mature into a different color than at immaturity. Please note the color at maturity (harvest). **A photo works great for this!**

Was the outer “paper sheath” difficult to remove? Tomatillos usually have a papery sheath enclosing the fruit. Please note if this sheath was present/absent and whether it was hard/easy to remove.